

PRODUCT ADVANTAGE



High Speed

Under the testing trajectory (25-305-25) of international standard, the cadence can be stabilized at a maximum of 600 cycles/min.

An individual robot can save 3 ~ 5 workers and replace 2 ~ 4 conventional sorting equipment.



High Precision

Even under the condition of high speed (over 300 cycles/min), the precision can still reach ± 0.02 mm. It is more applicable to high-precision sorting and assembly under the condition of high speed.



High Durability

It is of high-precision sliding Hooke joints, and by giving consideration to high precision, high applicability and specialization, and measured wear-resistance is as long as 20,000 hours.

The assembly of core component parts becomes convenient, the load capacity is strong and service life can be up to 8 years.



High Stability

The manipulator is maintenance-free throughout the year. No extra lubrication maintenance is required for each joint and pre-tensional structure is clearance free.

The structural design is simple and the connection of assembly is reliable.



COST-EFFECTIVE CHOICE FOR SIMPLE SCENARIOS

The 2 DOF high- speed parallel robot is designed for plane handling and assembly of light material, it does not need to be equipped with vision and relies on sensor positioning to complete the plane operation.



High Speed

Under the testing trajectory (25-305-25) of international standard, the cadence can be stabilized at a maximum of 350 cycles/min.



High Precision

Under the condition of high speed (300 cycles/min and above), the precision can be up to ± 0.02 mm.



High Stability

It is of zero-backlash joints, extra lubrication maintenance becomes unnecessary, which allows maintenance-free throughout the year.

D2 SERIES

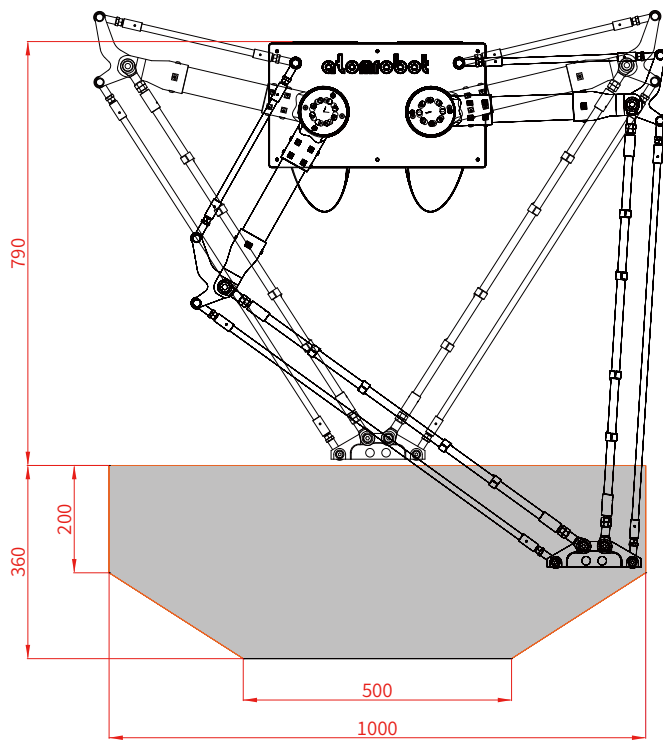
Models and Parameters



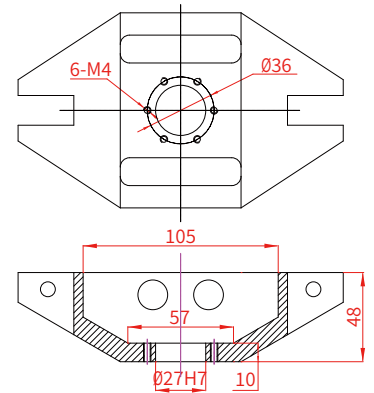
Model		D2-1000-P5	D2-1000-P15	D2-1300-P15	DD2-1000-P30
Axes		2	2	2	2
Max Payload		5kg	15kg	15kg	30kg
Manipulator	Weight	55kg	60kg	60kg	85kg
	Reach	1000mm	1000mm	1300mm	1000mm
Repeatability	Position	0.05mm	0.05mm	0.05mm	0.05mm
	Rotation	————	————	————	————
Maximum cadence		350pp/min	300pp/min	300pp/min	250pp/min
Rotation range		————	————	————	————
Allowable maximum moment of inertia		————	————	————	————
Angle range of actuated arm	Up	34°	25°	25°	25°
	Down	75°	77°	77°	77°
Power supply	Three-phase 380VAC -10%~+10%, 49~61HZ				
Power capacity	10KVA				
Rated power	4kw		6kw		
Storage temperature	-10°C~70°C				
Working environment	-10°C~50°C, RH≤80%				
Protection rating	IP55				

D2-1000-P5

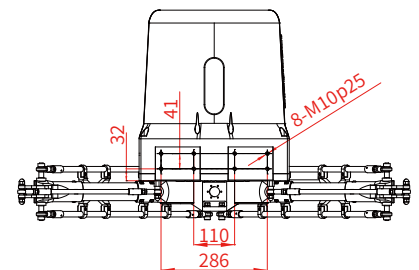
Overall Dimensions and Movement Range



Flange

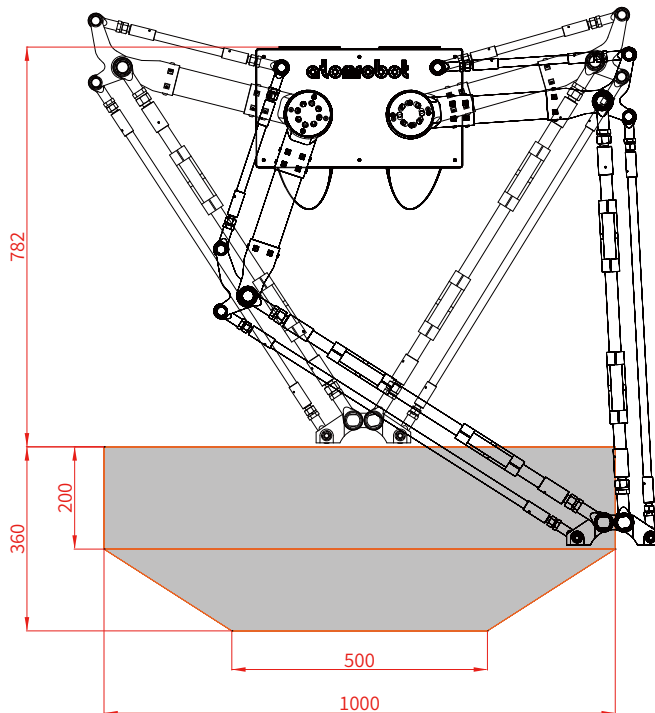


Base Installation

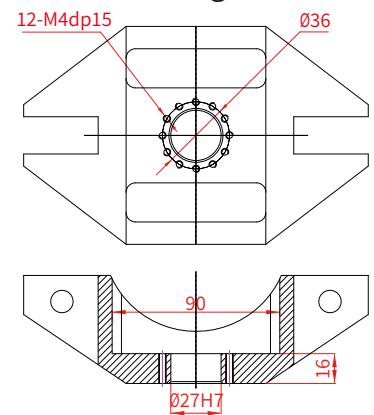


D2-1000-P15

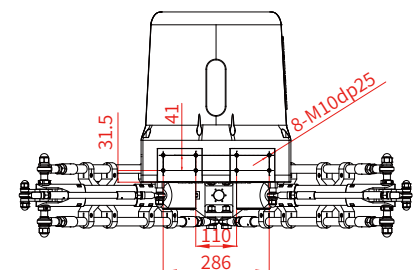
Overall Dimensions and Movement Range



Flange

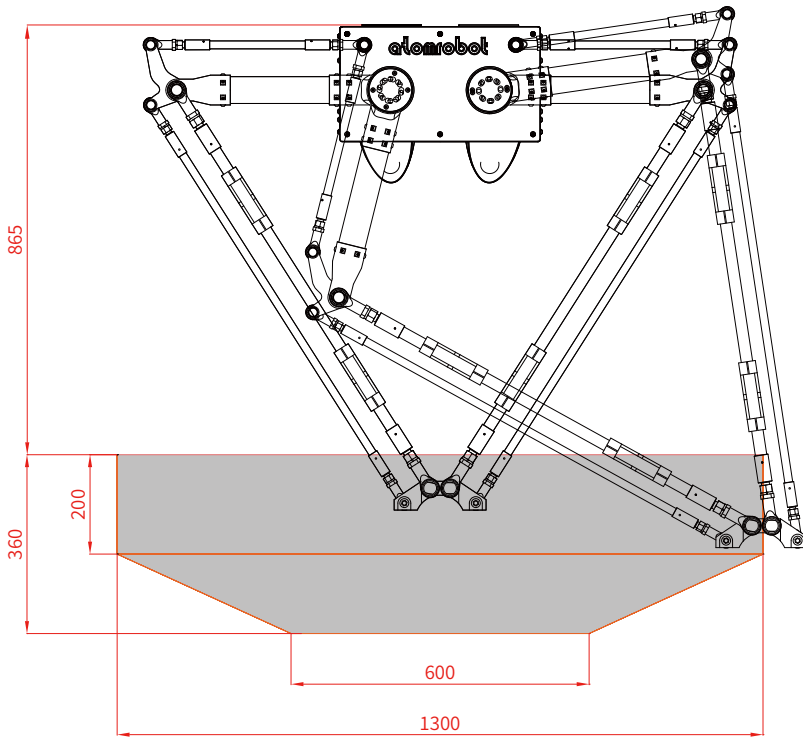


Base Installation

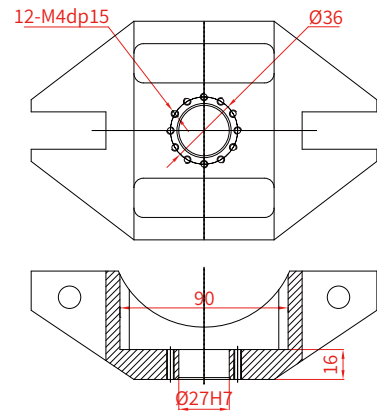


D2-1300-P15

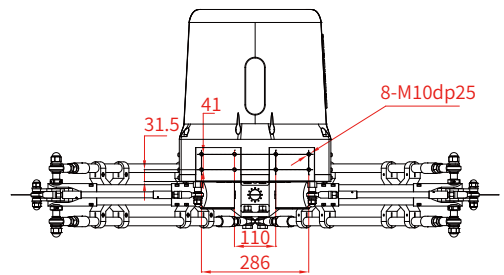
Overall Dimensions and Movement Range



Flange

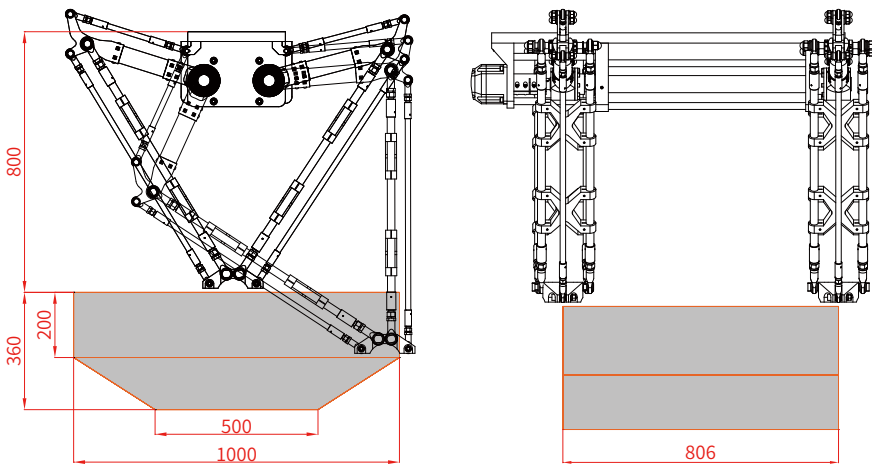


Base Installation

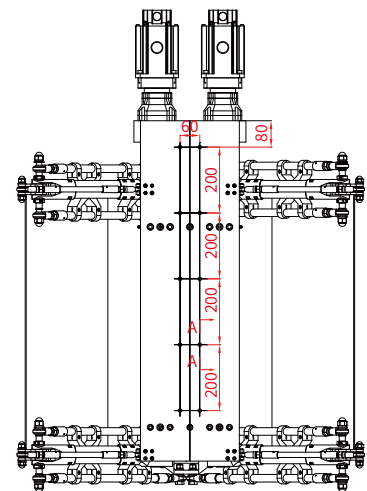


DD2-1000-P30

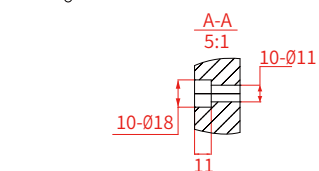
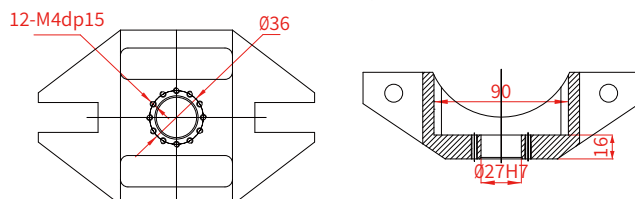
Overall Dimensions and Movement Range



Base Installation



Flange



NEW GENERATION OF CLASSIC BEST-SELLING PRODUCTS

The structure of classical high speed parallel robot allows functional features of translation along the X, Y and Z-axes in three-dimensional space and rotation around the Z-axis, with a high-precision machine vision system configured, it is applicable to high-speed production operations in the food, pharmaceutical and other industries, to be mainly used for the assembly, handling and sorting of light, small and random materials.



High Speed

Under the testing trajectory (25-305-25) of international standard, the cadence can be stabilized at a maximum of 600 cycles/min.



High Precision

Under the condition of high speed (300 cycles/min and above), the precision can be up to ± 0.02 mm.



High Stability

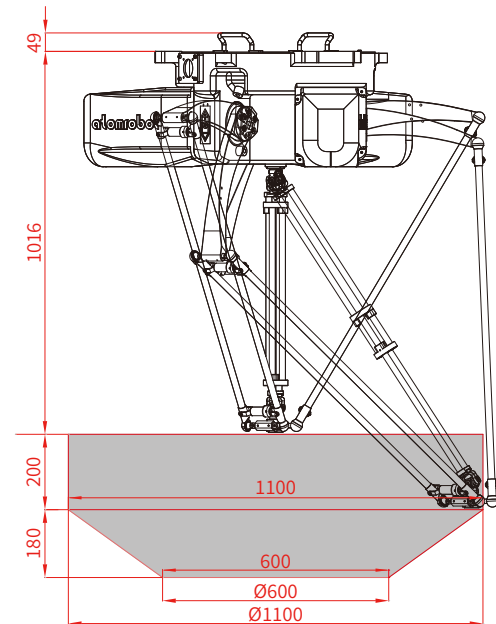
The manipulator is maintenance-free throughout the year. No extra lubrication maintenance is required for each joint and pre-tensional structure is clearance free.

D3PZ-1100-P3

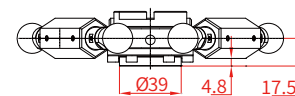
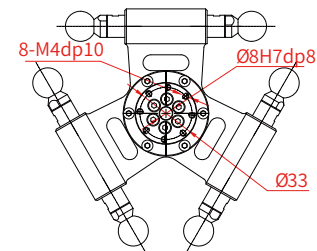
Models and Parameters



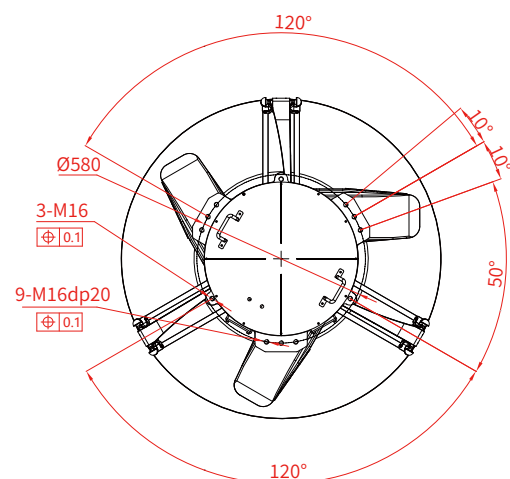
Overall Dimensions and Movement Range



Flange



Base Installation



Model		D3PZ-1100-P3
Axes		3+1
Max Payload		3kg
Manipulator	Weight	90.5kg
	Reach	1100mm
Repeatability	Position	0.05mm
	Rotation	0.1°
Maximum cadence		600pp/min
Rotation range		±360°
Allowable maximum moment of inertia		$31 \times 10^{-4} \text{kg} \cdot \text{m}^2$
Angle range of actuated arm	Up	24.5°
	Down	73.5°
Power supply		Three-phase 380VAC -10%~+10%, 49~61HZ
Power capacity		10KVA
Rated power		6.1kw
Storage temperature		-10°C~70°C
Working environment		-10°C~50°C, RH≤80%
Protection rating		IP54/IP67

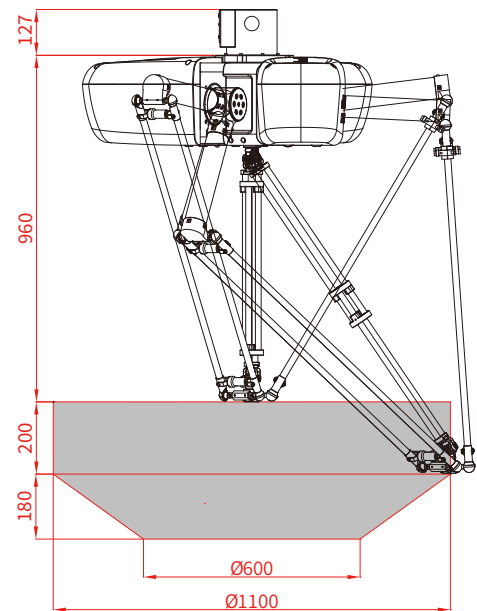
D3P-1100-P3

Models and Parameters

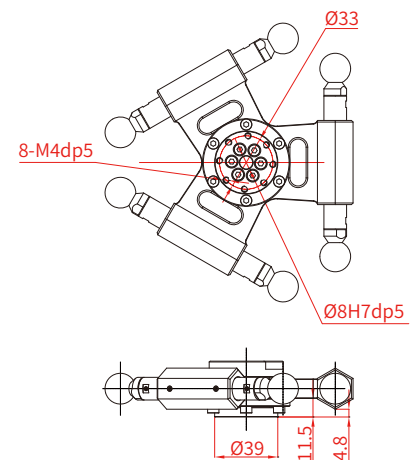


Model		D3P-1100-P3
Axes		3+1
Max Payload		3kg
Manipulator	Weight	90.5kg
	Reach	1100mm
Repeatability	Position	0.05mm
	Rotation	0.1°
Maximum cadence		600pp/min
Rotation range		±360°
Allowable maximum moment of inertia		$31 \times 10^{-4} \text{kg} \cdot \text{m}^2$
Angle range of actuated arm	Up	24.5°
	Down	73.5°
Power supply		Three-phase 380VAC -10%~+10%, 49~61HZ
Power capacity		10KVA
Rated power		6.1kw
Storage temperature		-10°C~70°C
Working environment		-10°C~50°C, RH≤80%
Protection rating		IP55

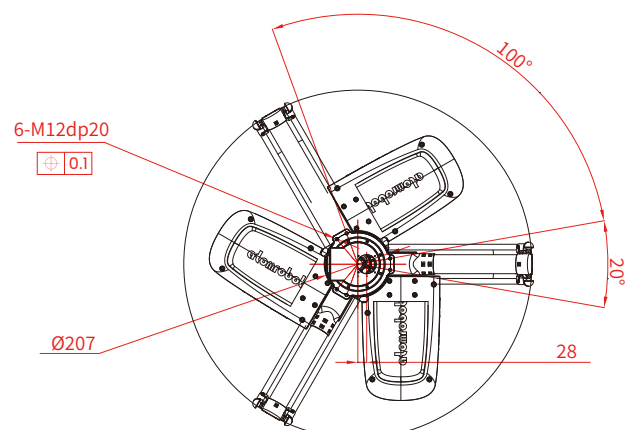
Overall Dimensions and Movement Range



Flange



Base Installation



atomrobot
阿童木机器人

+3-







Concentrate on precisely studying the technology
Pursue the perfection features of the products








Model	D3PZ-800-P3	D3PMZ-800-P3	D3PMZ-1100-P3	D3WZ-800-P3	D3WZ-1100-P3
Axes	3+1	3+1	3+1	3	3
Max Payload	3kg	3kg	3kg	3kg	3kg
Weight of manipulator	83kg	75kg	85kg	69.5kg	76kg
Reach of manipulator	800mm	800mm	1100mm	800mm	1100mm
Repeatability - position	0.05mm	0.05mm	0.05mm	0.05mm	0.05mm
Repeatability - rotation	0.1°	0.05°	0.05°	————	————
Maximum cadence (Note: no load, no pick/ release, 25-305-25 stroke)	600pp/min	540pp/min	540pp/min	600pp/min	600pp/min
Rotation range	±360°	±360°	±360°	————	————
Allowable maximum moment of inertia	$31 \times 10^{-4} \text{ kg} \cdot \text{m}^2$	$31 \times 10^{-4} \text{ kg} \cdot \text{m}^2$	$31 \times 10^{-4} \text{ kg} \cdot \text{m}^2$	————	————
Angle range of actuated arm - Up	30.2°	42.5°	32.5°	42.5°	32.5°
Angle range of actuated arm - Down	63.6°	65.8°	68.5°	65.8°	68.5°
Power supply	Three-phase 380VAC -10%~+10%, 49~61HZ				
Power capacity	6KVA		10KVA	6KVA	10KVA
Rated power	2.35kw		6.1kw	2.25kw	6kw
Storage temperature	-10°C~70°C				
Working environment	-10°C~50°C, RH≤80%				
Protection rating	IP67				









Model	D3P-450-P3	D3P-600-P3	D3P-800-P3	D3P-1300-P3	D3P-1600-P3	D3P-1100-P8
Axes	3+1	3+1	3+1	3+1	3+1	3+1
Max Payload	3kg	3kg	3kg	3kg	3kg	8kg
Weight of manipulator	41.5kg	66kg	88.8kg	93.5kg	96.8kg	128kg
Reach of manipulator	450mm	600mm	800mm	1300mm	1600mm	1100mm
Repeatability - position	0.05mm	0.05mm	0.05mm	0.05mm	0.05mm	0.05mm
Repeatability - rotation	0.1°	0.1°	0.1°	0.1°	0.1°	0.1°
Maximum cadence (Note: no load, no pick/ release, 25-305-25 stroke)	400pp/min	500pp/min	600pp/min	540pp/min	500pp/min	500pp/min
Rotation range	±360°	±360°	±360°	±360°	±360°	±360°
Allowable maximum moment of inertia	$31 \times 10^{-4} \text{ kg} \cdot \text{m}^2$	$31 \times 10^{-4} \text{ kg} \cdot \text{m}^2$	$31 \times 10^{-4} \text{ kg} \cdot \text{m}^2$	$31 \times 10^{-4} \text{ kg} \cdot \text{m}^2$	$31 \times 10^{-4} \text{ kg} \cdot \text{m}^2$	$250 \times 10^{-4} \text{ kg} \cdot \text{m}^2$
Angle range of actuated arm - Up	36.5°	36.5°	30.2°	24.6°	28°	13.5°
Angle range of actuated arm - Down	65.5°	65.5°	63.6°	78.5°	73°	78.5°
Power supply	Three-phase 380VAC -10%~+10%, 49~61HZ					
Power capacity	3KVA		6KVA		10KVA	
Rated power	1.3kw		2.35kw		6.1kw	
Storage temperature	-10°C~70°C					
Working environment	-10°C~50°C, RH≤80%					
Protection rating	IP55					

						
Model	D3P-1400-P8	D3P-1600-P6	D3PM-600-P3	D3PM-800-P3	D3PM-1100-P3	D3PM-1300-P3
Axes	3+1	3+1	3+1	3+1	3+1	3+1
Max Payload	8kg	6kg	3kg	3kg	3kg	3kg
Weight of manipulator	135kg	115kg	42kg	67.5kg	85kg	86.5kg
Reach of manipulator	1400mm	1600mm	600mm	800mm	1100mm	1300mm
Repeatability - position	0.05mm	0.05mm	0.05mm	0.05mm	0.05mm	0.05mm
Repeatability - rotation	0.1°	0.1°	0.05°	0.05°	0.05°	0.05°
Maximum cadence (Note: no load, no pick/ release, 25-305-25 stroke)	450pp/min	400pp/min	450pp/min	500pp/min	500pp/min	450pp/min
Rotation range	±360°	±360°	±360°	±360°	±360°	±360°
Allowable maximum moment of inertia	$250 \times 10^{-4} \text{ kg} \cdot \text{m}^2$	$80 \times 10^{-4} \text{ kg} \cdot \text{m}^2$	$31 \times 10^{-4} \text{ kg} \cdot \text{m}^2$	$31 \times 10^{-4} \text{ kg} \cdot \text{m}^2$	$31 \times 10^{-4} \text{ kg} \cdot \text{m}^2$	$31 \times 10^{-4} \text{ kg} \cdot \text{m}^2$
Angle range of actuated arm - Up	23.5°	28°	44.2°	42.5°	32.5°	31.5°
Angle range of actuated arm - Down	68°	73°	68.7°	65.8°	68.5°	74°
Power supply	Three-phase 380VAC -10%~+10%, 49~61HZ					
Power capacity	10KVA		4KVA	6KVA	10KVA	
Rated power	6.1kw		1.3kw	2.35kw	6.1kw	
Storage temperature	-10°C~70°C					
Working environment	-10°C~50°C, RH≤80%					
Protection rating	IP55					

					
Model	D3PM-1600-P3	D3PM-1600-P6	D3PM-1100-P15	D3PM-1600-P15	D3PM-1800-P15
Axes	3+1	3+1	3+1	3+1	3+1
Max Payload	3kg	6kg	15kg	15kg	15kg
Weight of manipulator	79.7kg	79.7kg	113kg	131kg	134kg
Reach of manipulator	1600mm	1600mm	1100mm	1600mm	1800mm
Repeatability - position	0.05mm	0.05mm	0.05mm	0.05mm	0.05mm
Repeatability - rotation	0.05°	0.05°	0.025°	0.025°	0.025°
Maximum cadence (Note: no load, no pick/ release, 25-305-25 stroke)	400pp/min	400pp/min	350pp/min	300pp/min	260pp/min
Rotation range	±360°	±360°	±360°	±360°	±360°
Allowable maximum moment of inertia	$31 \times 10^{-4} \text{ kg} \cdot \text{m}^2$	$31 \times 10^{-4} \text{ kg} \cdot \text{m}^2$	$0.224 \text{ kg} \cdot \text{m}^2$	$0.224 \text{ kg} \cdot \text{m}^2$	$0.224 \text{ kg} \cdot \text{m}^2$
Angle range of actuated arm - Up	22°	22°	23.5°	23°	23°
Angle range of actuated arm - Down	76°	76°	70°	71.5°	71.5°
Power supply	Three-phase 380VAC -10%~+10%, 49~61HZ				
Power capacity	10KVA		10KVA		
Rated power	6.1kw		6.2kw		
Storage temperature	-10°C~70°C				
Working environment	-10°C~50°C, RH≤80%				
Protection rating	IP55				



Model	D3PM-1200-P25	D3PM-1800-P25	D3PM-2200-P25	D3PM-2800-P25	D3W-600-P3	D3W-800-P3
Axes	3+1	3+1	3+1	3+1	3	3
Max Payload	25kg	25kg	25kg	25kg	3kg	3kg
Weight of manipulator	143kg	149kg	153kg	173kg	38.7kg	69.5kg
Reach of manipulator	1200mm	1800mm	2200mm	2800mm	600mm	800mm
Repeatability - position	0.05mm	0.05mm	0.05mm	0.05mm	0.05mm	0.05mm
Repeatability - rotation	0.025°	0.05°	0.05°	0.05°	———	———
Maximum cadence (Note: no load, no pick/ release, 25-305-25 stroke)	260pp/min	200pp/min	180pp/min	150pp/min	550pp/min	600pp/min
Rotation range	±360°	±360°	±360°	±360°	———	———
Allowable maximum moment of inertia	0.224kg · m ²	0.224kg · m ²	0.224kg · m ²	0.224kg · m ²	———	———
Angle range of actuated arm - Up	33.8°	42°	33.2°	33.2°	42.5°	42.5°
Angle range of actuated arm - Down	87.8°	75°	78.5°	78.5°	69.8°	65.8°
Power supply	Three-phase 380VAC -10%~+10%, 49~61HZ					
Power capacity	15KVA				3KVA	6KVA
Rated power	9.2kw				1.2kw	2.25kw
Storage temperature	-10°C~70°C					
Working environment	-10°C~50°C, RH≤80%					
Protection rating	IP55					

						
Model	D3W-1100-P5	D3W-1300-P3	D3W-1600-P3	D3W-1100-P15	D3W-1600-P15	D3W-1200-P25
Axes	3	3	3	3	3	3
Max Payload	5kg	3kg	3kg	15kg	15kg	25kg
Weight of manipulator	88kg	90kg	93kg	115kg	133kg	143kg
Reach of manipulator	1100mm	1300mm	1600mm	1100mm	1600mm	1200mm
Repeatability - position	0.05mm	0.05mm	0.05mm	0.05mm	0.05mm	0.05mm
Repeatability - rotation	————	————	————	————	————	————
Maximum cadence (Note: no load, no pick/ release, 25-305-25 stroke)	600pp/min	580pp/min	550pp/min	500pp/min	480pp/min	300pp/min
Rotation range	————	————	————	————	————	————
Allowable maximum moment of inertia	————	————	————	————	————	————
Angle range of actuated arm - Up	32.5°	31.5°	22°	23.5°	23°	33.8°
Angle range of actuated arm - Down	68.5°	74°	76°	70°	71.5°	87.8°
Power supply	Three-phase 380VAC -10%~+10%, 49~61HZ					
Power capacity	10KVA					15KVA
Rated power	6kw					9kw
Storage temperature	-10°C~70°C					
Working environment	-10°C~50°C, RH≤80%					
Protection rating	IP55					

DUAL-AXIAL DRIVE ACHIEVED KING PERFORMANCE FOR HORIZONTAL PICKING AND TILTING

Two parallel rotation axes are added to conventional 3-axis parallel robot to become the 5-axis robot, of which one of axes controls horizontal rotation while the other one control the rotation in vertical direction; the servo coupling control is used for two intermediate axes, which enables higher precision, faster speed and longer service life.



High Speed

Under the testing trajectory (25-305-25) of international standard, the cadence can be stabilized at a maximum of 400 cycles/min.



High Precision

Under the condition of high speed (300 cycles/min and above), the precision can be up to ± 0.02 mm.





High Stability

The manipulator is maintenance-free throughout the year. No extra lubrication maintenance is required for each joint and pre-tensional structure is clearance free.

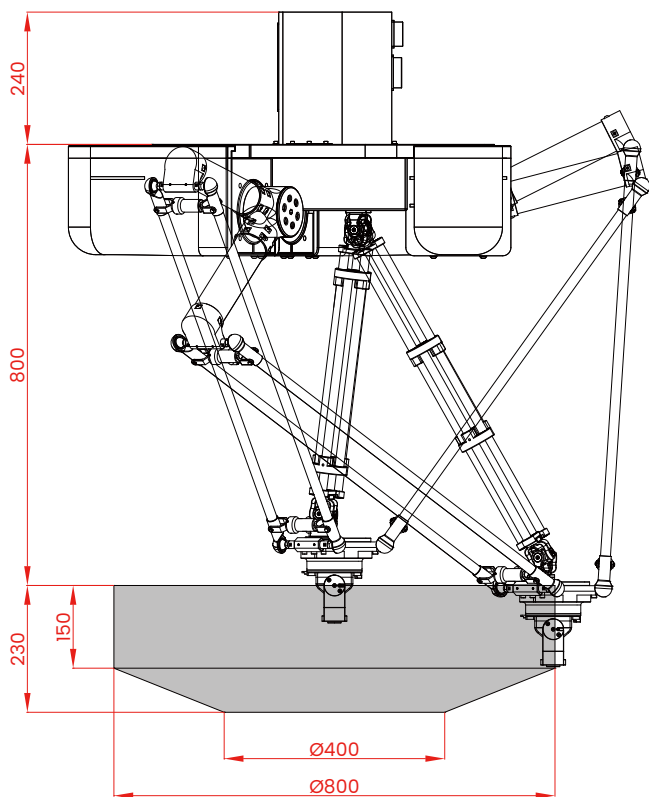
D5 SERIES

Models and Parameters

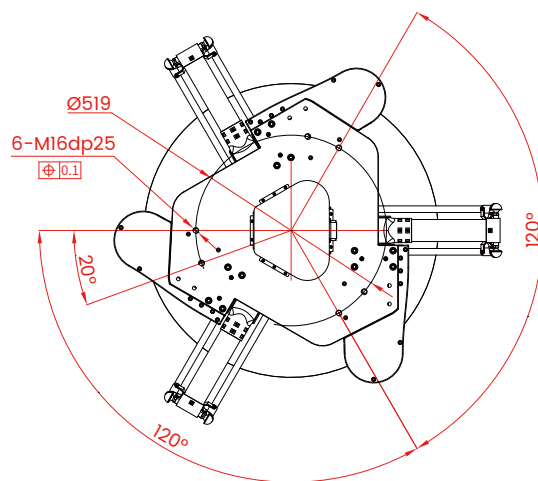
			
Model		D5-800-P2	D5-1200-P2
Axes		3+2	3+2
Max Payload		2kg	2kg
Manipulator	Weight	85kg	90kg
	Reach	800mm	1200mm
Repeatability	Position	0.05mm	0.05mm
	Rotation	0.1°	0.1°
Maximum cadence		400pp/min	380pp/min
Rotation range		±360°	±360°
Vertical rotation range		±90°	±90°
Allowable maximum moment of inertia		$31 \times 10^{-4} \text{kg} \cdot \text{m}^2$	$31 \times 10^{-4} \text{kg} \cdot \text{m}^2$
Angle range of actuated arm (Note: horizontal rotation)	Up	36.5°	36.5°
	Down	70.5°	70.5°
Power supply		Three-phase 380VAC -10%~+10%, 49~61HZ	
Power capacity		6KVA	10KVA
Rated power		2.5kw	6.2kw
Storage temperature		-10°C~70°C	
Working environment		-10°C~50°C, RH≤80%	
Protection rating		IP55	

D5-800-P2

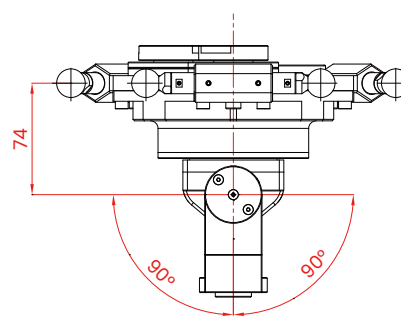
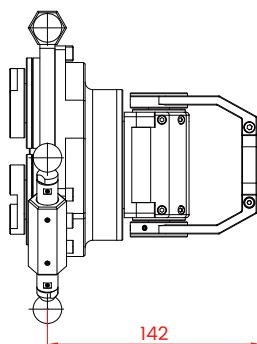
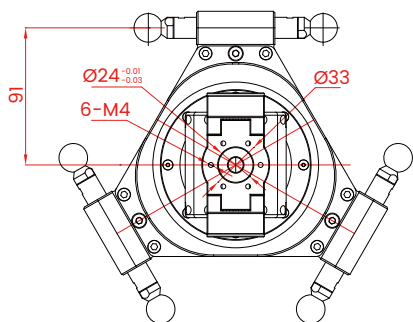
Overall Dimensions and Movement Range



Base Installation

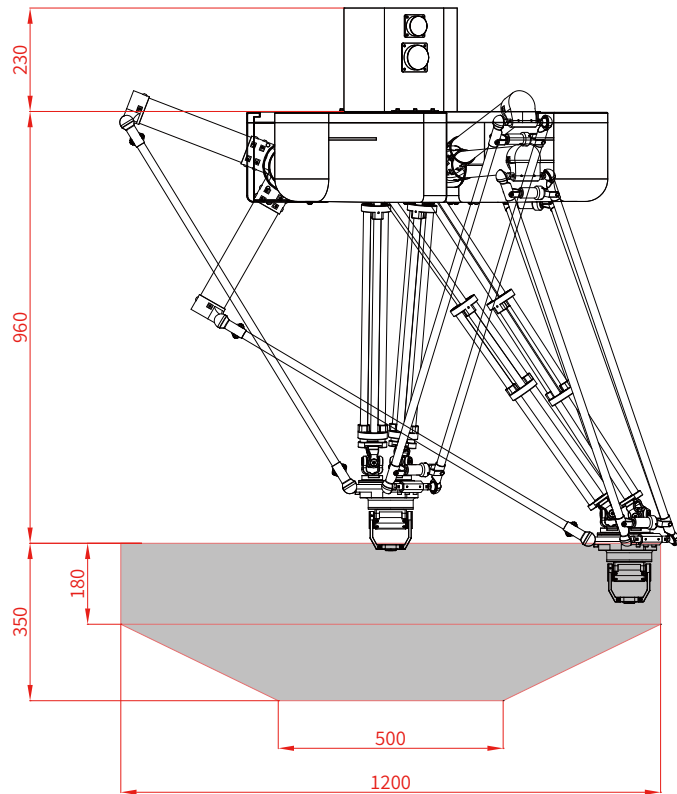


Flange

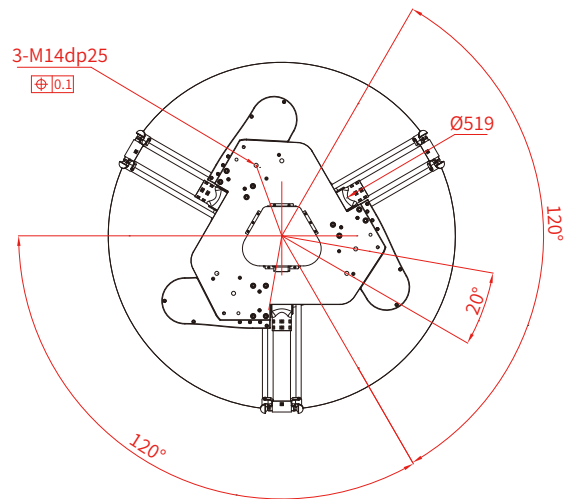


D5-1200-P2

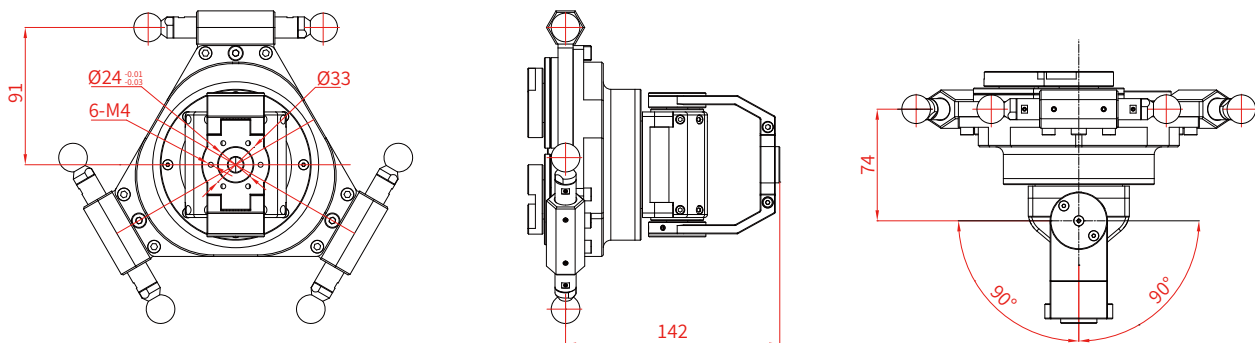
Overall Dimensions and Movement Range



Base Installation



Flange



SUPPORT PLATFORM FOR HEAVY LOAD CAPACITY

The classic Stewart parallel mechanism, can easily realize 6-DOF movement in three-dimensional space, the maximum load can reach 3000kg, meeting both demands on maximum precision and maximum load. The robot is ideal for high-precision test in laboratory, aerospace and other industries.



High Precision

The robot is ideal for high-precision test in laboratory, aerospace and other industries.



High Stability

The classic Stewart parallel mechanism, can easily realize 6-DOF movement in three-dimensional space.

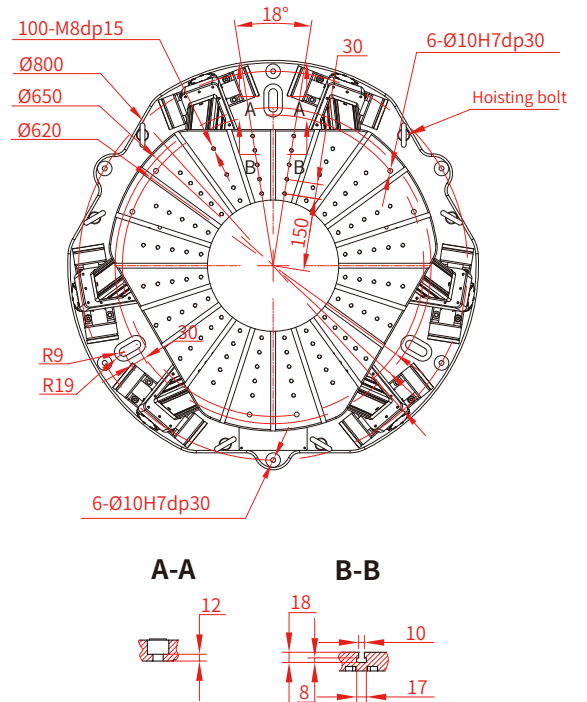
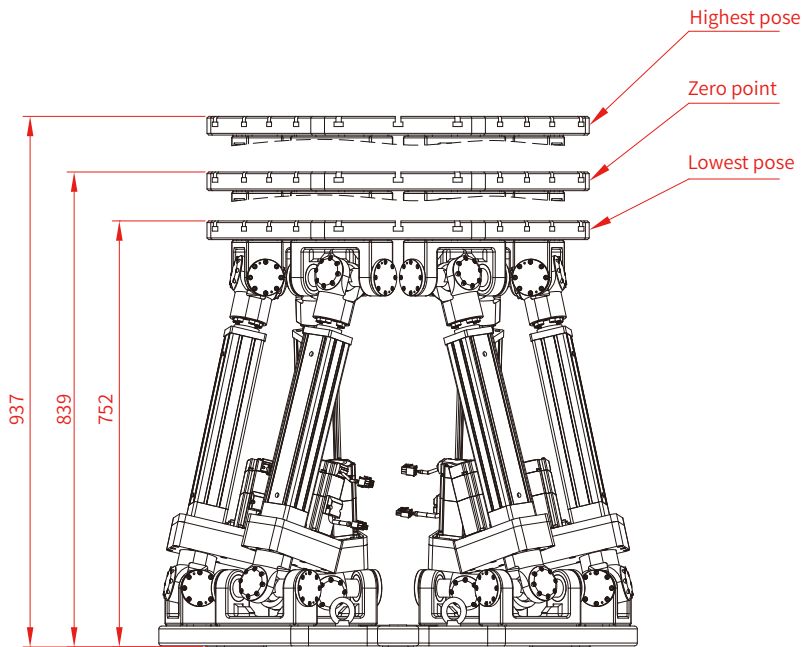
S6 SERIES

Models and Parameters

Model		S6-V0-P50	S6-V0-P200	S6-V1-P200	S6-V2-P3K
Axes		6	6	6	6
Max Payload		50kg	200kg	200kg	3000kg
Manipulator	Weight	260kg	550kg	768kg	3730kg
	Maximum movement speed	250mm/s	300mm/s	300mm/s	100mm/s
Repeatability	Position	0.05mm	0.05mm	0.05mm	0.1mm
	Rotation	0.02°	0.02°	0.02°	0.05°
Range of Axis	+ X-axis	±100mm	±100mm	±150mm	+700mm
	- X-axis	——	——	——	-100mm
	Y-axis	±100mm	±100mm	±150mm	±100mm
	Z-axis	±75mm	±75mm	±100mm	±100mm
	X-Rot	±20°	±15°	±20°	±10°
	Y-Rot	±20°	±15°	±20°	±10°
	Z-Rot	±20°	±15°	±20°	±10°
Power supply	Three-phase 380VAC -10%~+10%, 49~61HZ				
Power capacity	10KVA				40KVA
Rated power	2.4kw				14kw
Storage temperature	-10°C~70°C				
Working environment	0°C~50°C, RH≤80%				
Protection rating	IP55				

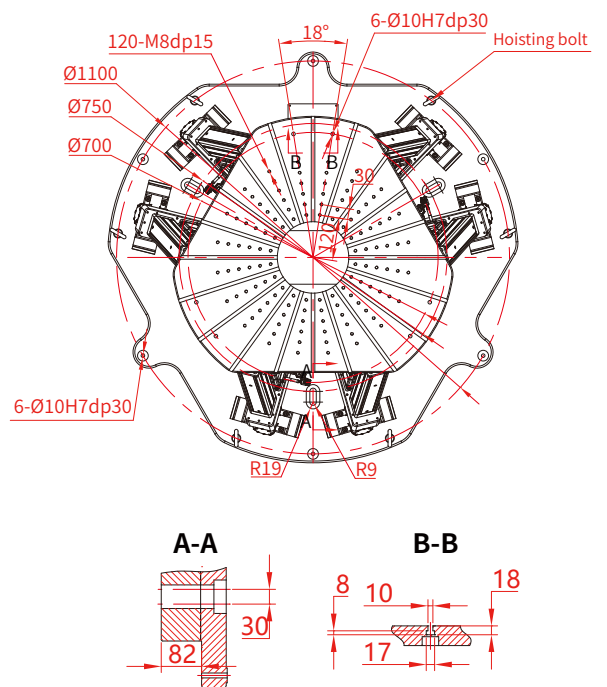
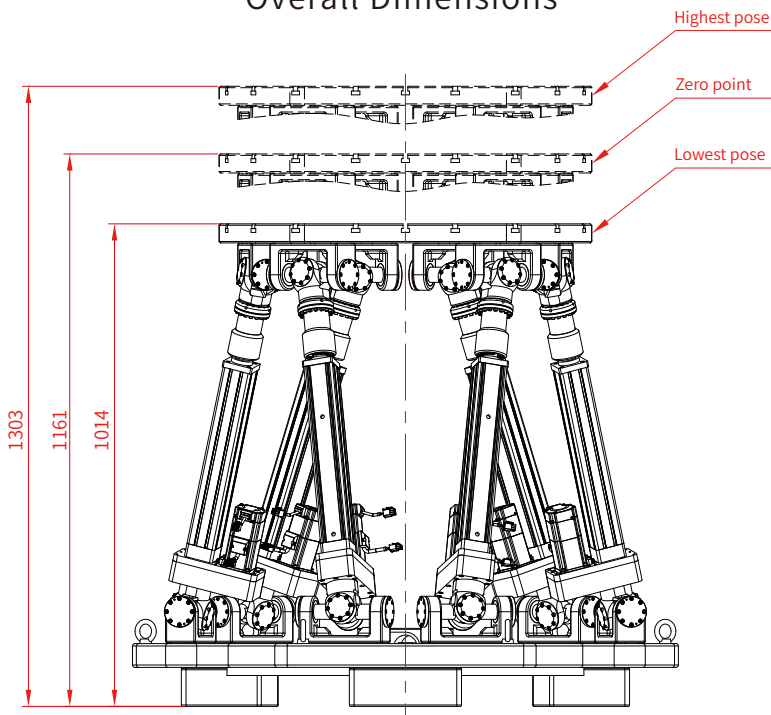
S6-V0-P50

Overall Dimensions



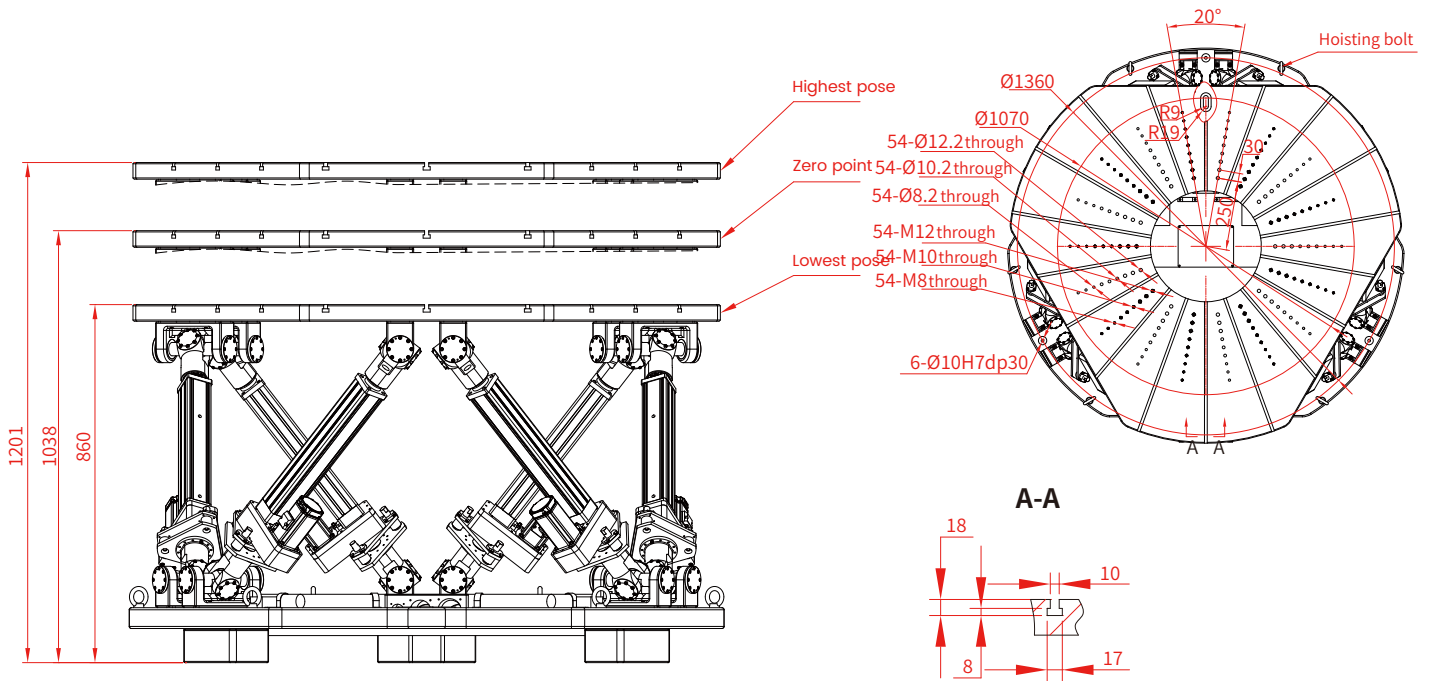
S6-V0-P200

Overall Dimensions



S6-V1-P200

Overall Dimensions



S6-V2-P3k

Overall Dimensions

